

# MONTHLY MEMBERSHIP PROGRESS REPORT

District 3233 C

Results as of: 12/31/2023

GMT:

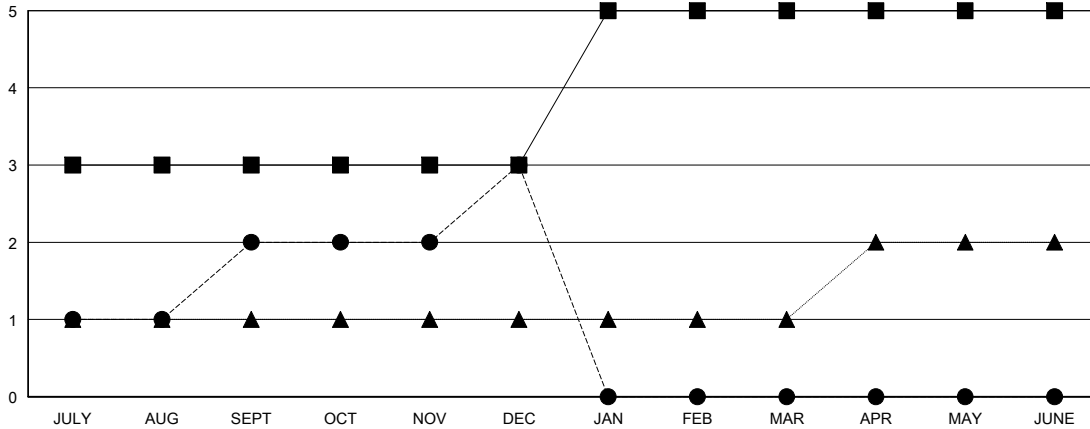
LOCATION INDIA

GMT CA

| Clubs                 |               |           |               |
|-----------------------|---------------|-----------|---------------|
| RESULTS FOR 2023-2024 |               |           |               |
| QUARTER               | NEW CLUB GOAL | NEW CLUBS | DROPPED CLUBS |
| JULY/AUG/SEPT         | 3             | 2         | 2             |
| OCT/NOV/DEC           | 0             | 1         | 2             |
| JAN/FEB/MAR           | 2             | 0         | 0             |
| APR/MAY/JUNE          | 0             | 0         | 0             |

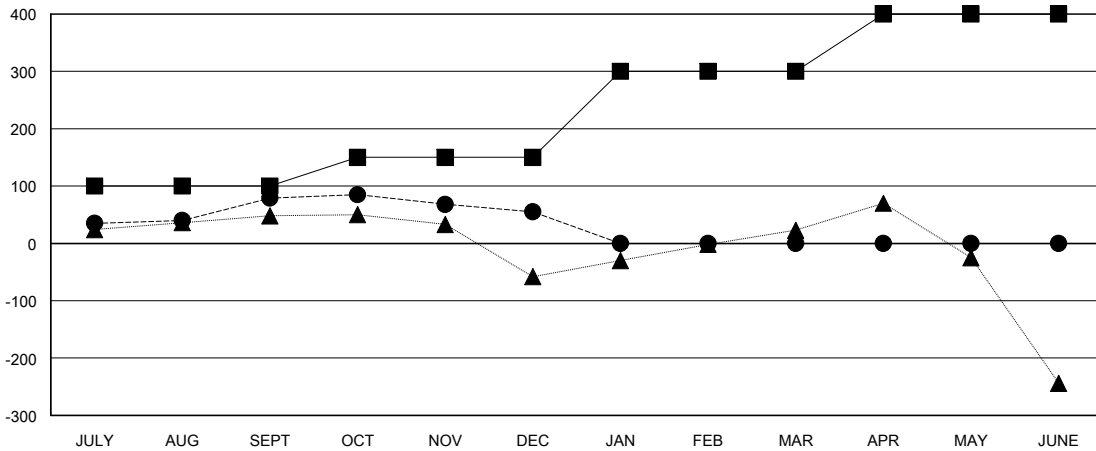
| Members               |                        |                      |  |
|-----------------------|------------------------|----------------------|--|
| RESULTS FOR 2023-2024 |                        |                      |  |
| QUARTER               | MEMBER GROWTH NET GOAL | MEMBER GROWTH ACTUAL | DROPPED MEMBERS ACTUAL (including transfers) |
| JULY/AUG/SEPT         | 100                    | 144                  | 54   |
| OCT/NOV/DEC           | 50                     | 50                   | 73   |
| JAN/FEB/MAR           | 150                    | 0                    | 0  |
| APR/MAY/JUNE          | 100                    | 0                    | 0  |

GOALS AND ACTUAL NEW CLUBS CUMULATIVE



- - CURRENT YEAR GOALS FOR NEW CLUBS
- - CURRENT YEAR ACTUAL NEW CLUBS
- ▲ - LAST YEAR ACTUAL NEW CLUBS

GOALS AND ACTUAL MEMBERS CUMULATIVE



- - MEMBER GROWTH NET GOAL
- - MEMBER GROWTH ACTUAL
- ▲ - LAST YEAR MEMBERSHIP ACTUAL

|                        |   |                                     |
|------------------------|---|-------------------------------------|
| DROPPED CLUBS: 4       | 43 CLUBS OF 127 ADDED 1 OR MORE NEW MEMBERS               | <b>GENDER DISTRIBUTION</b>          |
|                        |   | MALE 1,880 (65.83%)                 |
|                        |   | FEMALE 974 (34.10%)                 |
| <b>DROPPED MEMBERS</b> | <a href="#">CLICK HERE FOR CUMULATIVE MEMBERSHIP DATA</a> | TOTAL FAMILY UNIT MEMBERS 1,063     |
| DECEASED 5             |   | FAMILY MEMBERS PAYING HALF DUES 593 |
| CLUB CANCELLED 44      |   |                                     |
| OTHER 78               |   |                                     |
| <b>TOTAL 127</b>       |   |                                     |